



## Pair of Talosel earrings (Model called Rosace) by Line Vautrin

Line Vautrin

---

### MANUFACTURER :

Line Vautrin

### PERIOD :

Circa 1960

### DIMENSIONS :

Height: 15/64 in. (0,6 cm)| Width: 63/64 in. (2,5 cm)| Depth:  
63/64 in. (2,5 cm)

## About Pair of Talosel earrings (Model called Rosace) by Line Vautrin

Pair of Talosel earrings inlaid with decorative mirrors (Model called Rosace) by Line Vautrin. Pair of beige Talosel earrings. Inlaid with garnet and mother-of-pearl colored mirrors forming a rosette. The back hot scarified.

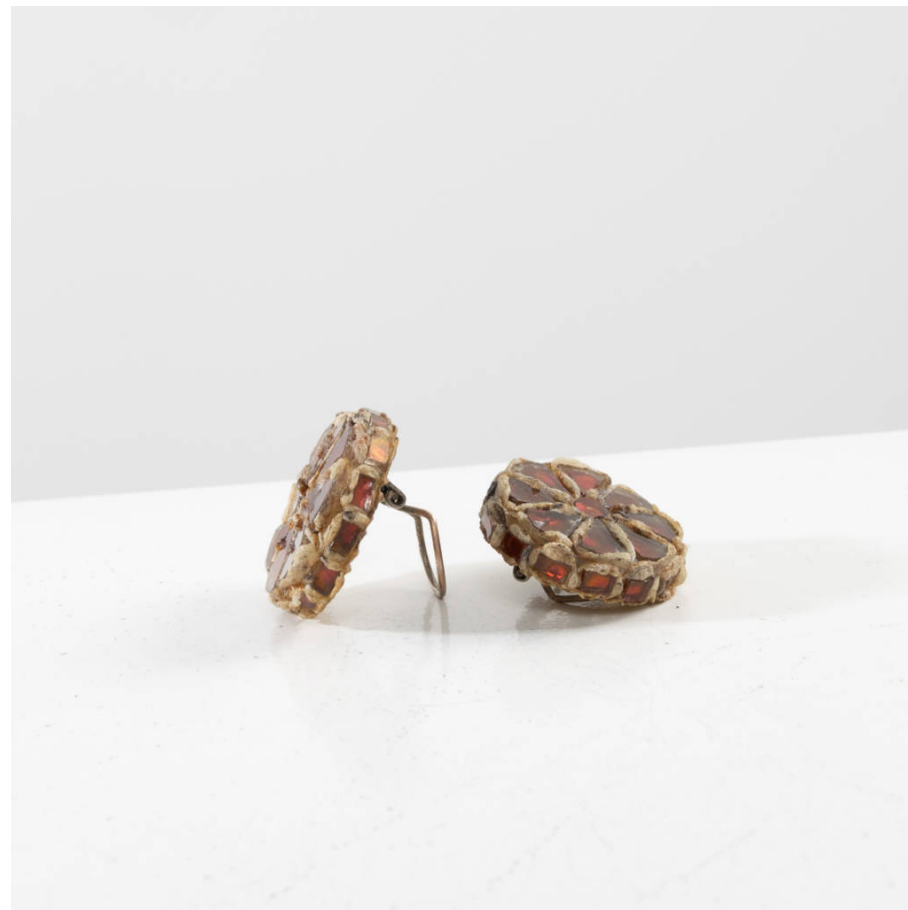
## You should know

Equipped with clip clasps Very good condition

unforget. XX<sup>th</sup> century  
decorative  
arts



unforget. XX<sup>th</sup> century  
decorative  
arts



unforget. XX<sup>th</sup> century  
decorative  
arts

