



## Amour roi de ton coeur by Line Vautrin

Line Vautrin

---

MANUFACTURER :

Line Vautrin

PERIOD :

Circa 1945 - 1950

DIMENSIONS :

Height: 1 3/16 in. (3 cm) | Width: 3 5/32 in. (8 cm) | Depth: 3 5/32 in. (8 cm)

REFERENCE :

B06\_41

## About Amour roi de ton coeur by Line Vautrin

Amour roi de ton coeur (Love King of Your Heart) by Line Vautrin , Silver Bronze Box. Silver-plated bronze box with a lid enhanced with a decoration representing a two-tone wheel, the upper part enameled in blue and the lower part enameled in white. At the top appears the word “AMOUR”. A small heart acts as a lid opening grip. Line Vautrin drew inspiration from the poem “Roi de ton cœur” (“King of Your Heart”), written by Guillaume Apollinaire in 1915, to design this rebus. The rebus can be deciphered as follows: “Amour, roi de ton coeur” (AMOUR – Roue à deux tons – Coeur). Amour : Amour Roue à deux tons = Roi de ton (two tones wheel). Coeur for the grip – (Heart). The inside of the box is covered with cork. A rare box !

## You should know

Signature on two lines on the reverse "LINE VAUTRIN". Very good condition, patina of use on the silvering.

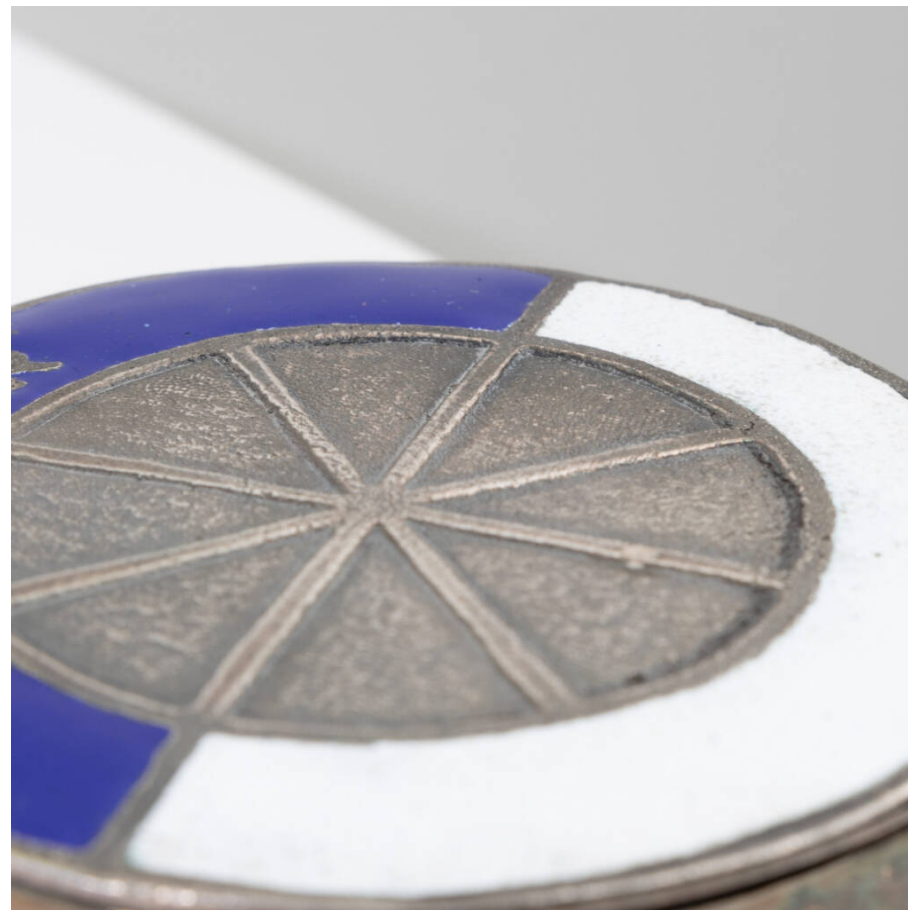
unforget. XX<sup>th</sup> century  
decorative  
arts



unforget. XX<sup>th</sup> century  
decorative  
arts



unforget. XX<sup>th</sup> century  
decorative  
arts





unforget. XX<sup>th</sup> century  
decorative  
arts



unforget. XX<sup>th</sup> century  
decorative  
arts



unforget. XX<sup>th</sup> century  
decorative  
arts

