

## Brooch by Line Vautrin

Line Vautrin

---

MANUFACTURER :

Line Vautrin

PERIOD :

Circa 1960

DIMENSIONS :

Height: 1 31/32 in. (5 cm) | Width: 1 49/64 in. (4,5 cm) | Depth:  
1 49/64 in. (4,5 cm)

REFERENCE :

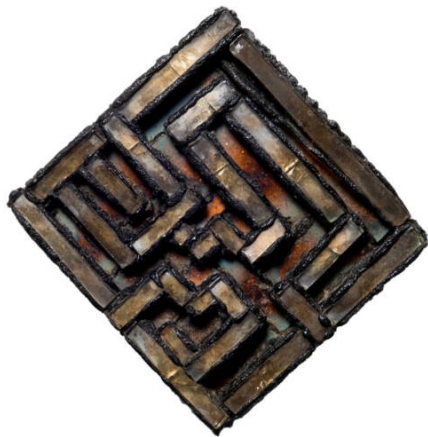
UI11\_71

## About Brooch by Line Vautrin

Black Talosel Brooch Inlaid with Gilt Mirror Fragments by Line Vautrin. Square brooch in black talosel, structured by a rigorously composed geometric relief. The surface is animated by a network of small, slightly raised rectangular elements arranged in a quasi-labyrinthine pattern, creating a highly rhythmic interplay of solids and voids. The finely striated edges emphasize the worked character of the object and attest to a carefully executed craftsmanship.

## You should know

Bears the artist's jewelry signature mark "JOUX". | Very good condition.



unforget. XX<sup>th</sup> century  
decorative  
arts

