



La ville à la campagne by Line Vautrin

Line Vautrin

MANUFACTURER :

Line Vautrin

PERIOD :

Circa 1950

DIMENSIONS :

Height: 1 3/16 in. (3 cm) | Width: 2 9/16 in. (6,5 cm) | Depth:
3 5/32 in. (8 cm)

REFERENCE :

1705_19

About La ville à la campagne by Line Vautrin

“La ville à la campagne” silvered bronze box by Line Vautrin. The lid of box is chiseled with a decoration representing a town, the reverse of the chiseled box represents a farm. This box evokes the “city-country” duality through a poetic illustration by Line Vautrin.

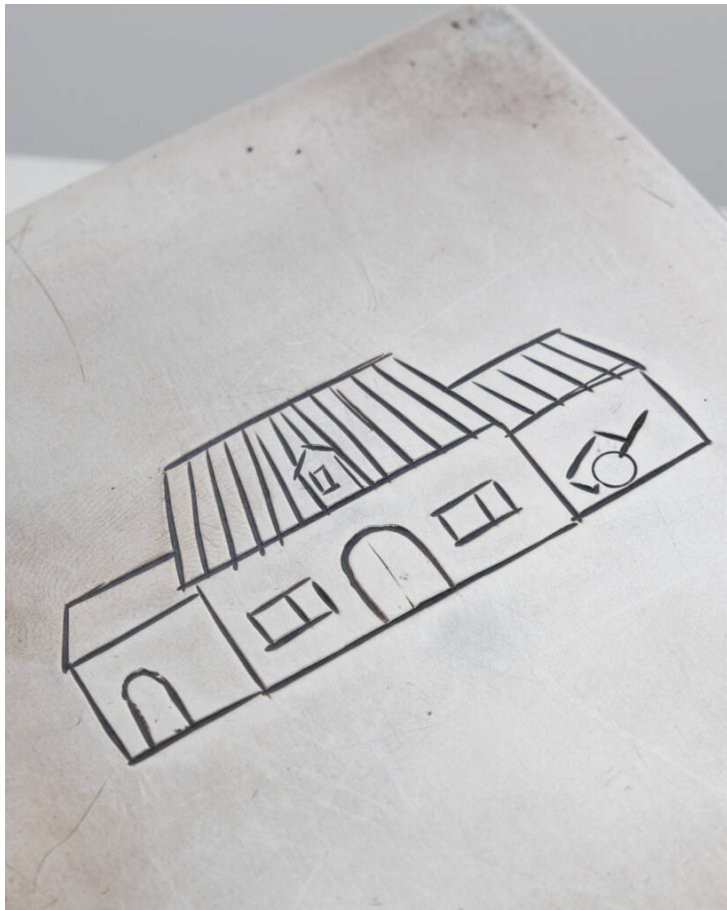
You should know

Signed by stamping on the right side "LINE VAUTRIN" on two lines. Very nice original condition.

unforget. XXth century
decorative
arts



unforget. XXth century
decorative
arts



unforget. XXth century
decorative
arts



unforget. XXth century
decorative
arts



unforget. XXth century
decorative
arts

