



Les Vertèbres (The Vertebrae) by Line Vautrin

Line Vautrin

MANUFACTURER :

Line Vautrin

PERIOD :

circa 1945

DIMENSIONS :

Neck length: 18 57/64 in. (48cm) | Width: 1 3/8 in. (3,5cm)

REFERENCE :

UH11_50

About Les Vertèbres (The Vertebrae) by Line Vautrin

The Vertebrae, gilt bronze necklace by Line Vautrin. A semi-rigid necklace made up of articulated links in gilded bronze, in the shape of a spine. It features two rows of fourteen inverted “vertebrae”. The necklace is finished with two heart-shaped elements that secure the fastening clips at the back of the neck. An emblematic piece from the “Poetess of Metal”. This model is also referred to as “L’Arête Médiane Accroche la Lumière”. This is the smaller version of the model, two different sizes were offered.

You should know

Signed "LINE VAUTRIN" and monogrammed L.V. on the back of two links. Very good original condition.

unforget. XXth century
decorative
arts



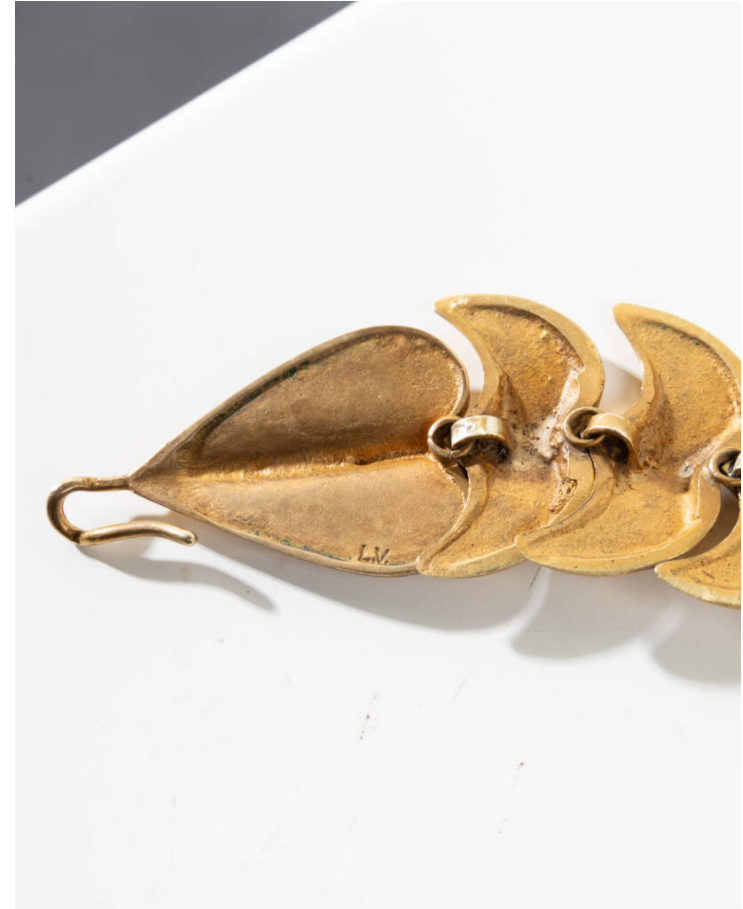
unforget. XXth century
decorative
arts



unforget. XXth century
decorative
arts



unforget. XXth century
decorative
arts



unforget. XXth century
decorative
arts

