



L'étoile à pleuré rose by Line Vautrin

Line Vautrin

MANUFACTURER :

Line Vautrin

PERIOD :

Circa 1945 - 1950

DIMENSIONS :

Height: 33/64 in. (1,3 cm) | Width: 4 11/64 in. (10,6 cm) | Depth:
3 5/32 in. (8 cm)

REFERENCE :

ZI11

About L'étoile à pleuré rose by Line Vautrin

L'étoile à pleuré rose, gilded bronze vide-poche by Line Vautrin. Rectangular in shape with subtly irregular edges, this rare gilded bronze vide-poche is engraved in relief with a poetic text. The hammered surface, with its warm shimmering patina, enhances the lettering, whose irregular typography is a hallmark of Line Vautrin's artistic language. It reads : "The star wept rose at the heart of your ears Infinity rolls white from your nape to your loins The sea beaded red at your vermillion breasts And man bleeds black at your sovereign flank." Inspired by a poem by Arthur Rimbaud, this piece perfectly exemplifies Line Vautrin's way of blending poetry, humor, and surrealist imagery with metalwork, transforming an everyday object into a fragment of dream.

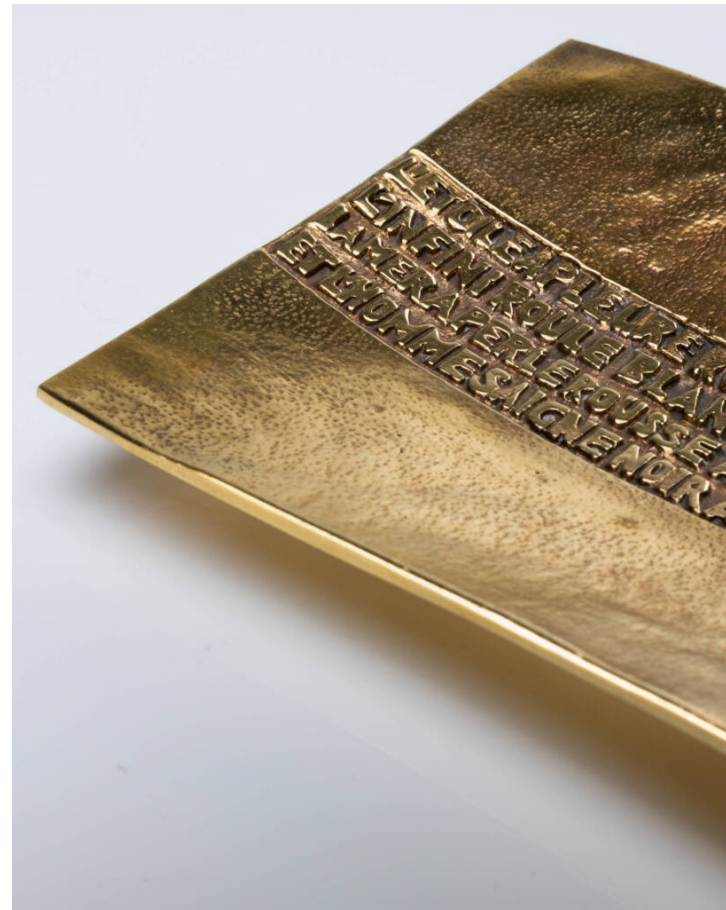
You should know

To the best of our knowledge, this piece is unique in its version. Stamped signature on the reverse L.V. Very good original condition.

unforget. XXth century
decorative
arts



unforget. XXth century
decorative
arts



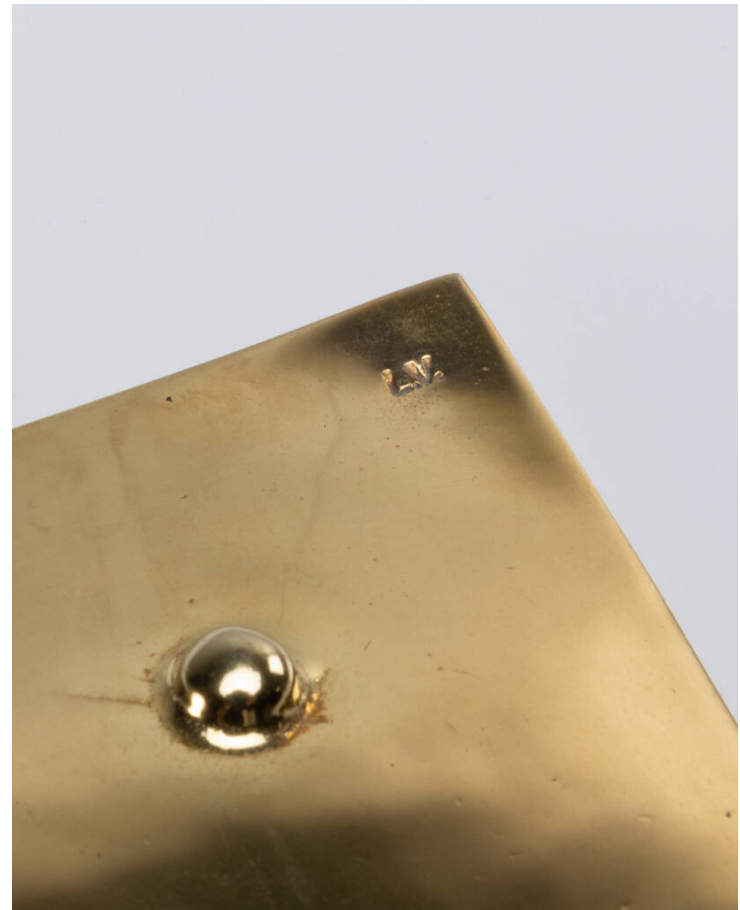
unforget. XXth century
decorative
arts



unforget. XXth century
decorative
arts



unforget. XXth century
decorative
arts



unforget. XXth century
decorative
arts

