



Long Talosel Necklace by Line Vautrin

Line Vautrin

MANUFACTURER :

Line Vautrin

PERIOD :

Circa 1960

DIMENSIONS :

Height: 16 47/64 in. (42,5 cm) | Width: 33 15/32 in. (8,5 cm) |

Depth: 5/32 in. (0,4 cm)

About Long Talosel Necklace by Line Vautrin

Long necklace in white Talosel inlaid with mirrors in shades of pink by Line Vautrin. Made up of two rows of “pellets” of different shapes. On the second row hung a pendant.

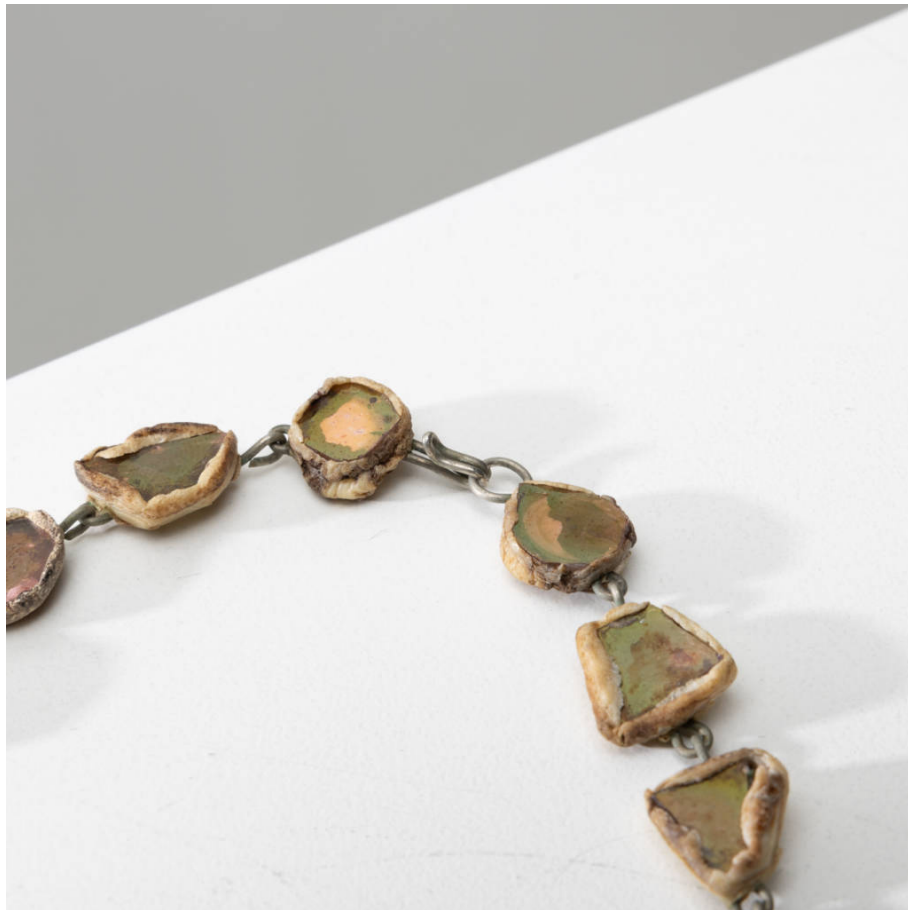
You should know

Very good condition

unforget. XXth century
decorative
arts



unforget. XXth century
decorative
arts



unforget. XXth century
decorative
arts

