



Pair of Talosel earrings (Model called Rosace) by Line Vautrin

Line Vautrin

MANUFACTURER :

Line Vautrin

PERIOD :

Circa 1960

DIMENSIONS :

Height: 15/64 in. (0,6 cm)| Width: 63/64 in. (2,5 cm)| Depth:
63/64 in. (2,5 cm)

REFERENCE :

COUG10_19

About Pair of Talosel earrings (Model called Rosace) by Line Vautrin

Pair of Talosel earrings inlaid with decorative mirrors (Model called Rosace) by Line Vautrin. Pair of beige Talosel earrings. Inlaid with garnet and mother-of-pearl colored mirrors forming a rosette. The back hot scarified.

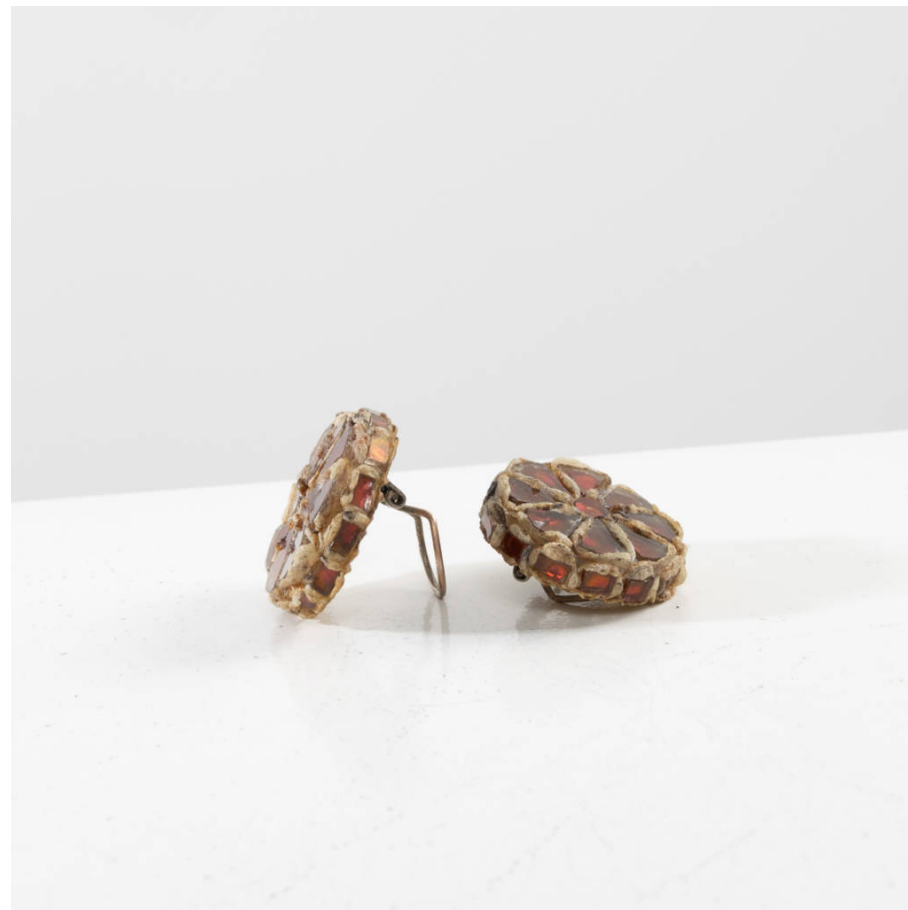
You should know

Equipped with clip clasps Very good condition

unforget. XXth century
decorative
arts



unforget. XXth century
decorative
arts



unforget. XXth century
decorative
arts

