



## Si face à elle j'osais by Line Vautrin

Line Vautrin

---

### MANUFACTURER :

Line Vautrin

### PERIOD :

Circa 1950

### DIMENSIONS :

Height: 1 3/16 in. (3 cm) | Width: 2 23/64 in. (6 cm) | Depth: 2 3/4 in. (7 cm)

### REFERENCE :

ZI15

## About Si face à elle j'osais by Line Vautrin

Si face à elle j'osais, silvered bronze box by Line Vautrin. "Si face à elle j'osais," rebus box in silvered bronze. Rectangular silvered bronze box with a rebus decoration. The lid depicts six "faces," whose eyes and mouth are represented by the letters A and L (for à elle), stylized in relief as small visages, evoking the phrase "six faces." On the reverse, the inscription "sais" completes the visual enigma, in association with the "j'o" on the front, to form the phrase "j'osais" ("I dared"). The object thus reads as a poetic and enigmatic phrase, typical of Line Vautrin: "Si face à elle j'osais" – "If, before her, I dared." With discreet wit and a taste for wordplay, Vautrin here transposes her universe of symbols, riddles, and double meanings into a small, intimate and precious object. Inside lined with cork.

## You should know

Lit. : Secret de Bijoux: Line Vautrin. Exhibition catalogue. Paris: Musée des Arts Décoratifs, March 10–May 30, 1999, p. 34, no. 11. Boutonnet, C., C. Boutonnet, and R. Ortiz. Line Vautrin. Exhibition catalogue. Paris: L'Arc en Seine, December 6, 2002–January 31, 2003, p. 4. Bokelberg, A. Line Vautrin: Poesie in Metall. Exhibition catalogue. Hamburg: Museum für Kunst und Gewerbe, April 16–June 29, 2003, pp. 43, 99, no. 39. For a drawing of the model: Vautrin, L., and P. Mauriès. Rébus. Paris: Le Promeneur, 1994, n.p., no. 20. Stamped signature on left side on two lines "LINE VAUTRIN". Very good original condition.

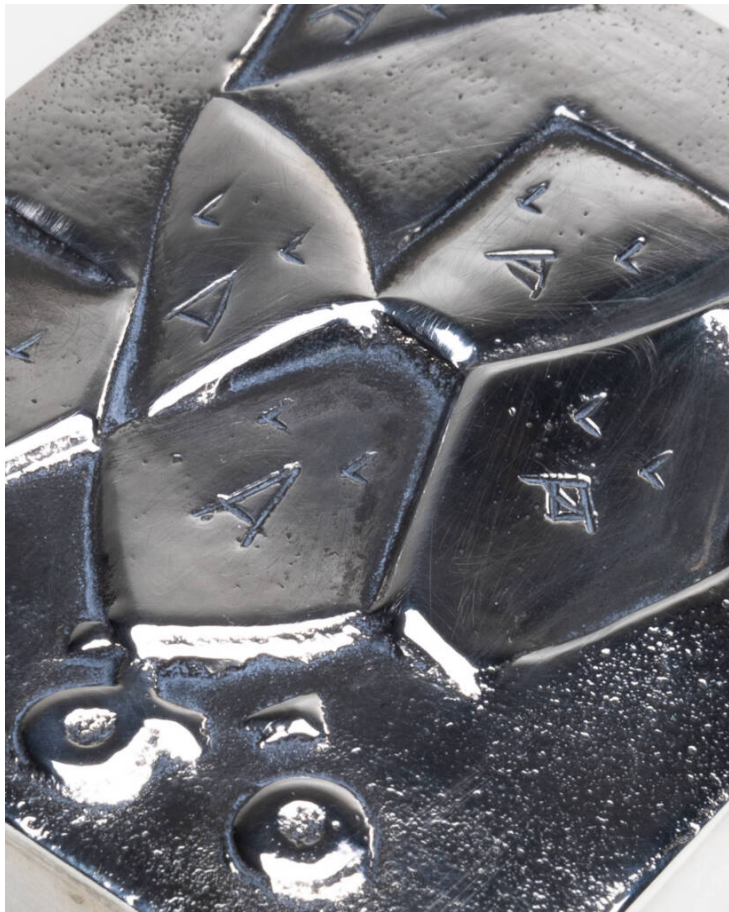
unforget. XX<sup>th</sup> century  
decorative  
arts



unforget. XX<sup>th</sup> century  
decorative  
arts



unforget. XX<sup>th</sup> century  
decorative  
arts



unforget. XX<sup>th</sup> century  
decorative  
arts

