



Talosel vide-poche by Line Vautrin – Inlaid with fragments of mirrors

Line Vautrin

MANUFACTURER :

PERIOD :

Around 1955 - 1960

DIMENSIONS :

Height: $1 \frac{3}{16}$ (3 cm) | Width: $3 \frac{15}{16}$ (10 cm) | Depth: $4 \frac{3}{32}$ (10.4 cm)

REFERENCE :

COUG03_06

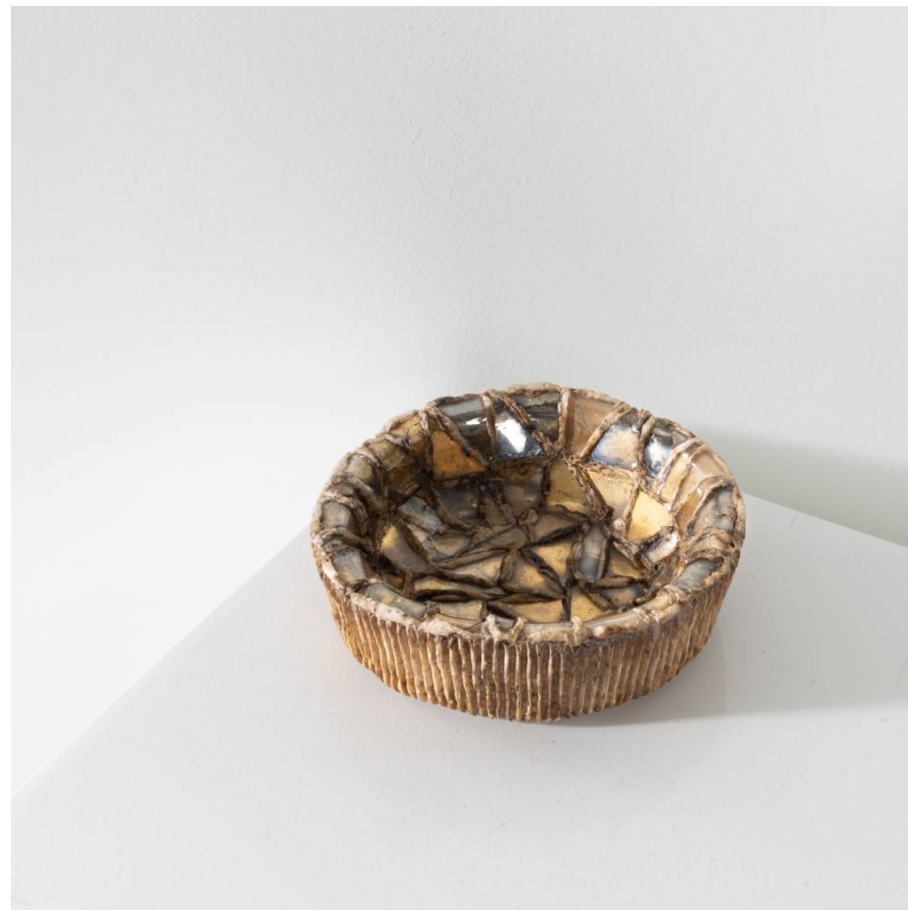
About Talosel vide-poche by Line Vautrin – Inlaid with fragments of mirrors

Talosel vide-poche inlaid with fragments of mirrors by Line Vautrin. Empty-pocket in Champagne-colored talosel encrusted with fragments of gilt and bronze mirrors. The reverse and the edge entirely scarified. Signed in a rectangle on the reverse “L.Vautrin”

You should know

Signed in a rectangle on the reverse "L.Vautrin"

unforget. XXth century
decorative
arts



unforget. XXth century
decorative
arts



unforget. XXth century
decorative
arts



unforget. XXth century
decorative
arts



unforget. XXth century
decorative
arts

